

# HDMI Extender



MODEL:HD-S120

Operating Instructions



Dear Customer

Thank you for purchasing this product. For optimum performance and safety, please read these instructions carefully before connecting, operating or adjusting this product. Please keep this manual for future reference.

## FEATURES

- HDMI version 1.3 and HDCP version 2.0 compliant
- Supports 1080p and 720p video, plus 2-channel audio
- One source feeds an almost unlimited number of HDTVs (127)
- Uses off-the-shelf gigabit IP switches for extension and distribution
- Plug-and-play operation - no programming or setup required
- Extends 1080p HDMI signals up to 120m over a single UTP Cat5e/6 cable
- Cable runs can be extended another 120m by adding a Gigabit Ethernet switch
- Traffic can unicast,multicast or broadcast for different applications
- With IR Control function ,it allows you control back the source at the end of destination
- Maximum 3 layers of ethernet switches could be passed through

## NOTICE

Our company reserve the right to make changes in the hardware, packaging and any accompanying documentation without prior written notice.

TABLE OF CONTENTS

- Specifications
- Package Contents
- Panel Descriptions
- Connecting and
- Operating Typical
- Application

SPECIFICATIONS

Operating Temperature Range	-5 to +35 °C(+23 to +95 °F)
Operating Humidity Range	5 to 90%RH (No Condensation)
Input Video Signal	0.5-1.0 Volts P-P
Input DDC Signal	5 volts p-p(TTL)
Support Video Format	DTV/HDTV:480i/576i/480P/576P/720P/1080i/1080P
HDMI Output	Compliant with HDMI 1.3, HDCP2.0
Transmission Distance	1080P 8-bit 120m(Maximum) over single CAT5E/6 /24AWG/Solid
Power consumption	13.5watts(Maximum)
Dimension (L×W×H)	163x126x26mm
Net Weight	RX 465g,TX 465g

Note1: Specifications are subject to change without notice. Mass and dimensions are approximate.

PACKING CONTENTS

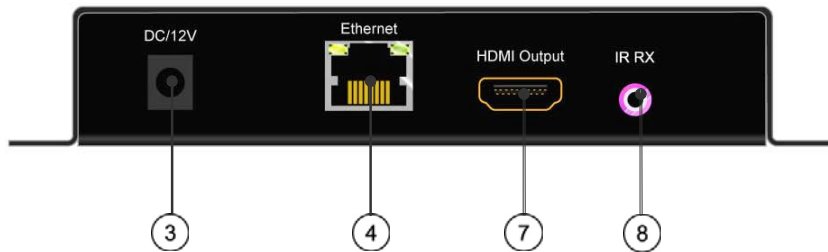
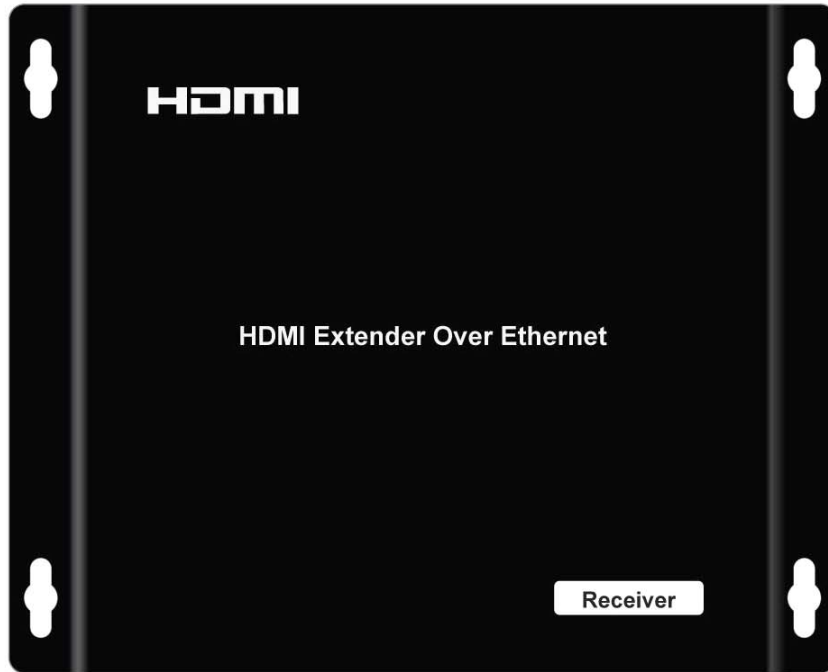
- 1) Main Unit. Transmitter & Receiver HDMI Extender
- 2) DC 12V 2A x2PCS
- 3) IR-TX cable&IR-RX cable
- 4) Operating Instructions

PANEL DESCRIPTIONS

Transmitter Panel



Receiver Panel



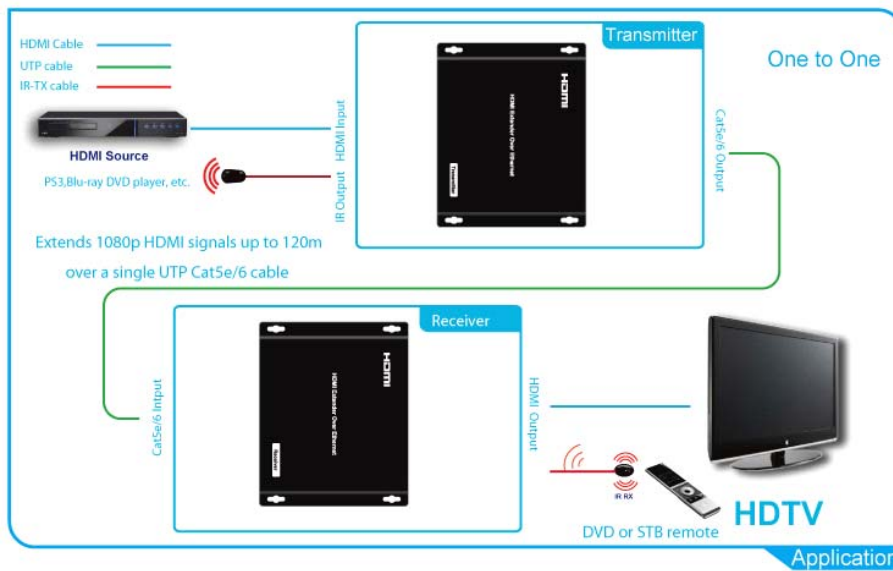
- ① Indicator of power input
- ② Status of signal connection
- ③ Power input port
- ④ Ethernet in port
- ⑤ HDMI in port
- ⑥ IR-TX in port
- ⑦ HDMI out port
- ⑧ IR-RX in port

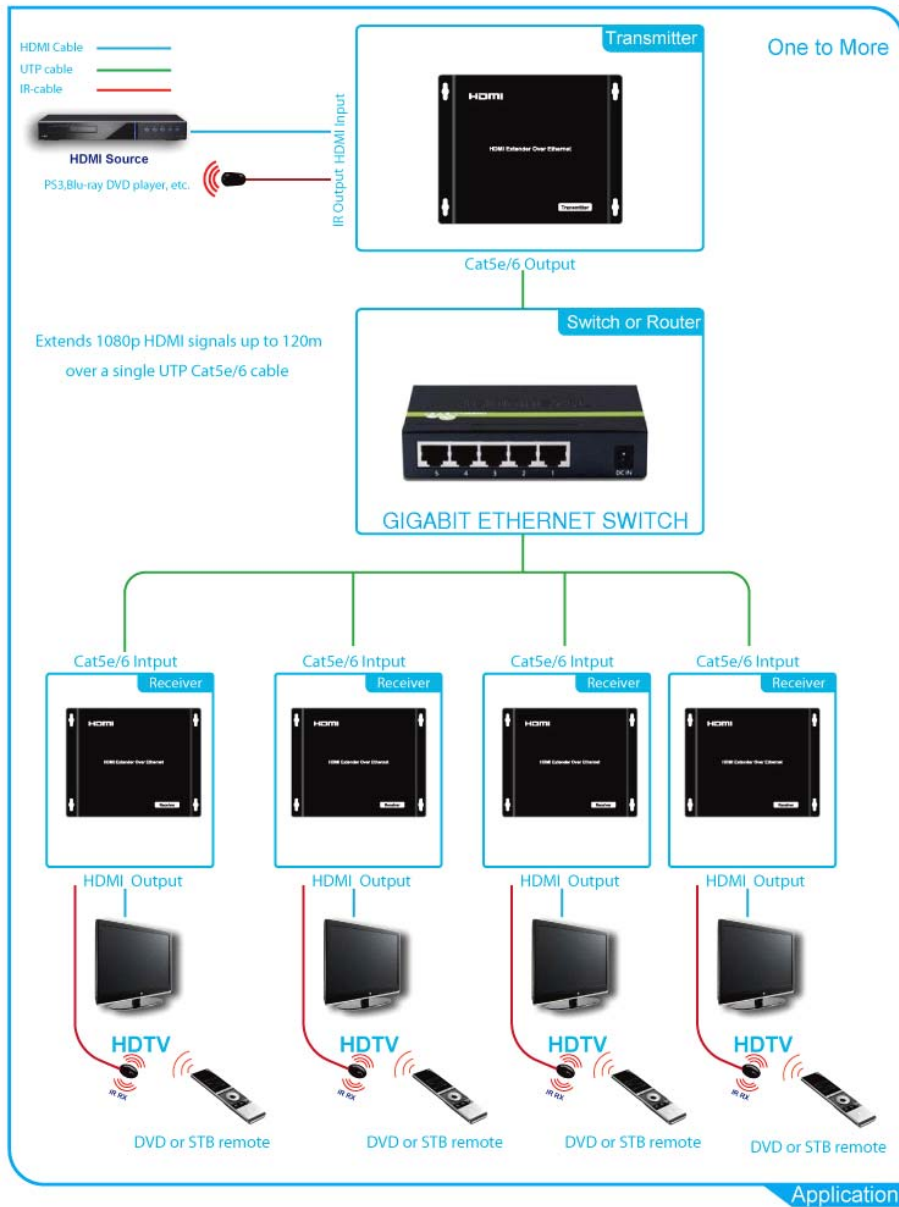
CONNECTING AND OPERATING

- 1) Connect the HDMI signal sources (Such as DVD, STB etc) to HDMI Transmitter.
- 2) Connect CAT5e or 6 cables to both the Ethernet of the transmitter and Ethernet port of the Receiver.  
(The cables must follow the standard of EIA-TIA 568B).
- 3) Connect the HDMI output (Such as HD-LCD, HD-DLP) into the Receiver.
- 4) Connect the power supply into Power port.
- 5) Connect IR-TX cable into IR-TX port . Connect IR-RX cable into IR-RX port .

Attention: Insert/Extract cables gently.

Typical Application







## HD-S120

Brought to you by



**Oarsman Electronics Co., Ltd.**

Tel: +886 6 258 4661

Fax: +886 6 258 4680

E-mail: [market@oarsman.com.tw](mailto:market@oarsman.com.tw)

Website: <http://www.oarsman.com.tw>